




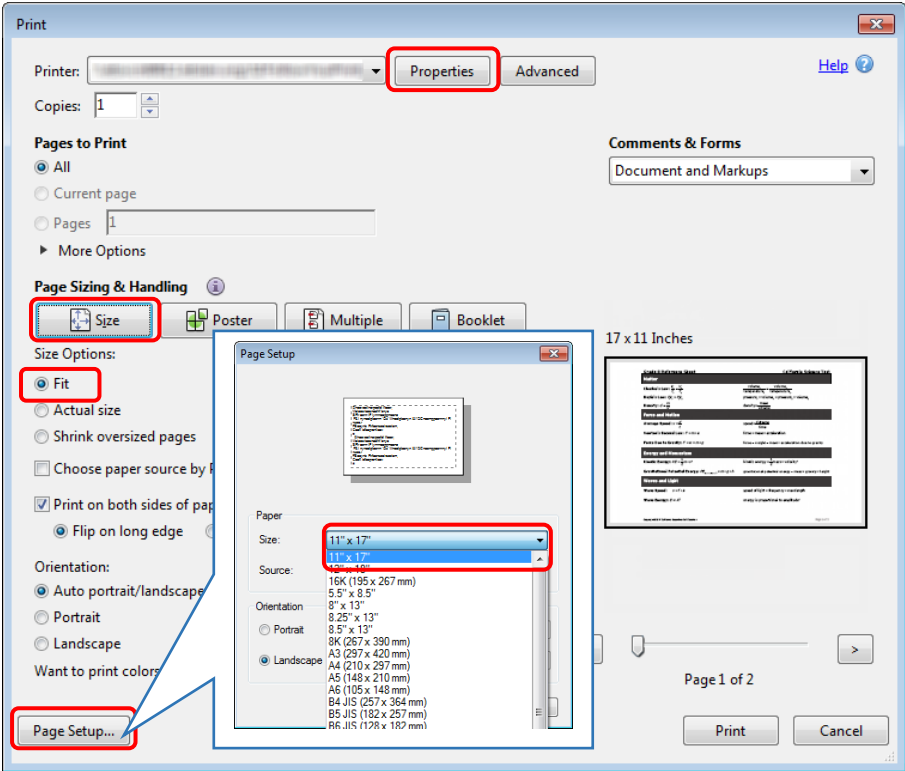
Printing Enlarged Science Reference Tools

The grade-level science reference tools—reference sheets for students in grades eight and high school—for the California Science Test pilot may be enlarged to fit on an 11" x 17" piece of paper when printed for a student for whom this non-embedded designated support has been assigned. There is no additional test setting associated with enlarging a reference sheet.

Because there are many devices, operating systems, and versions of Adobe Acrobat Reader and Adobe Acrobat Professional in use, steps for printing PDFs may vary. Print settings that were encountered in one version of Acrobat have been provided for guidance.

1. Begin the printing process by selecting the *File* menu and then *Print*. Using the keyboard command [Ctrl] + [P] might also work, as would selecting the **[Print]**  printer icon that appears in the Acrobat functions toolbar that may appear when you hover your cursor at the bottom of a PDF opened from a Web page.
2. Make sure the following settings are selected on the *Print* dialog box:

Section	Setting
Page Sizing & Handling	[Size] button
Size Options	<i>Fit</i> radio button



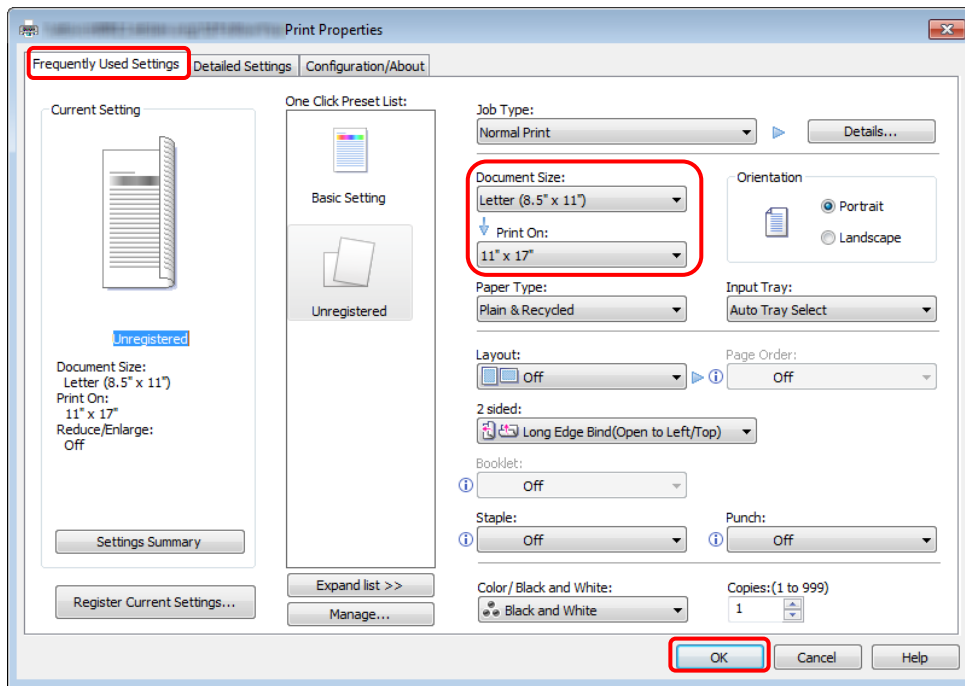
Print dialog box



Printing Enlarged Science Reference Tools

3. Select the **[Page Setup]** button and then select “ 11” x 17” ” from the *Size* drop-down list. (This step may be necessary because these reference tools are designed in a portrait orientation.)
4. Select the **[OK]** button to close the *Page Setup* dialog box.
5. Select the **[Properties]** button.
6. Make sure the following settings are selected in the **[Frequently Used Settings]** tab of the *Print Properties* dialog box:

Drop-down List	Setting
Document Size	8.5" x 11"
Print On	11" x 17"



Print Properties dialog box

7. Select **[OK]** to exit *Print Properties*.
8. Select **[Print]** to print the enlarged PDF to a sheet of 11" x 17" paper.